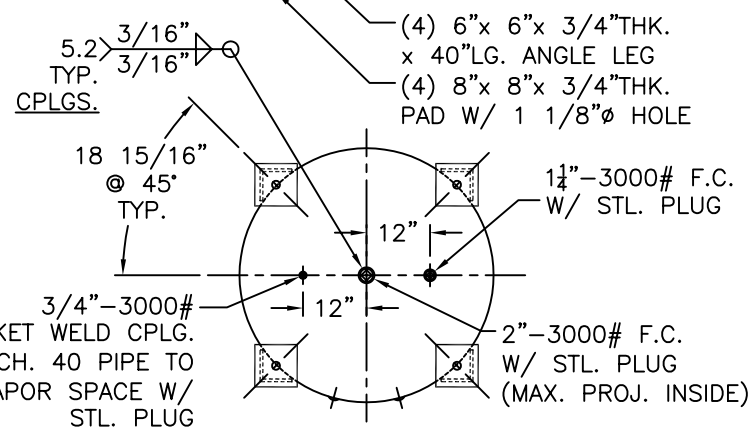
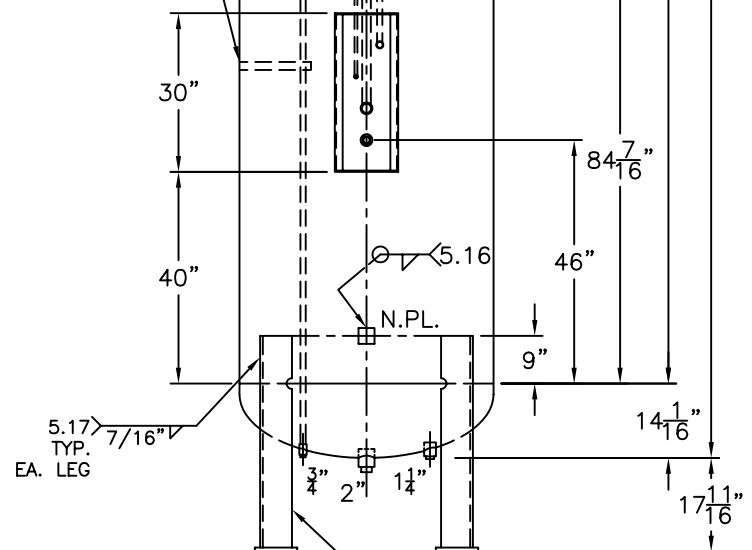


LIQUID LEVEL	
LIQUID LEVEL	79.8%
OT	43 5/8"
HE	56 3/4"
LI	
CL	
EA	
LEG	
SHELL / HEADS	
M.A.W.P.	250 PSIG. @ 200 °F
M.D.M.T.	-20 °F @ 250 PSIG.
ASME. SECTION VIII	DIV.1, 2004 ADD. 2005
X-RAY:	RT-4 SPOT L.S. & HDS. G.S.
GALLONS:	1999 WT. 4523 LBS.
SERIAL NO.	
N.B.	

NOTE: 1) WELDS TO, OR JOINING SA-612 HAVE W.P.S. W/ SUFFIX "B".  
 2) INTERNAL PIPES PER PA-417-B-1B.  
 3) HYDRO @ 328 PSIG. MIN.

ANGLE CLIP PIPE TIE TYP.



<b>PA-417-B</b>		REV. 10-26-06
FOR: HANSON STANDARD		DATE: 3-5-99
VERT. L.P.G. TANK.		
SURFACE AREA = 287.6 SQ. FT.		
C.F.M. REQ'D. = 5568		
INSIDE: UNPAINTED & DEHYDRATE		
OUTSIDE: PRIME		
LEG-ZONE 4-5 KM.		
BY: E.S.	SCALE: 1/2"=12"	
<b>ROY E. HANSON JR. MFG.</b>		
1600 E. WASHINGTON BLVD.		
LOS ANGELES, CA 90021		