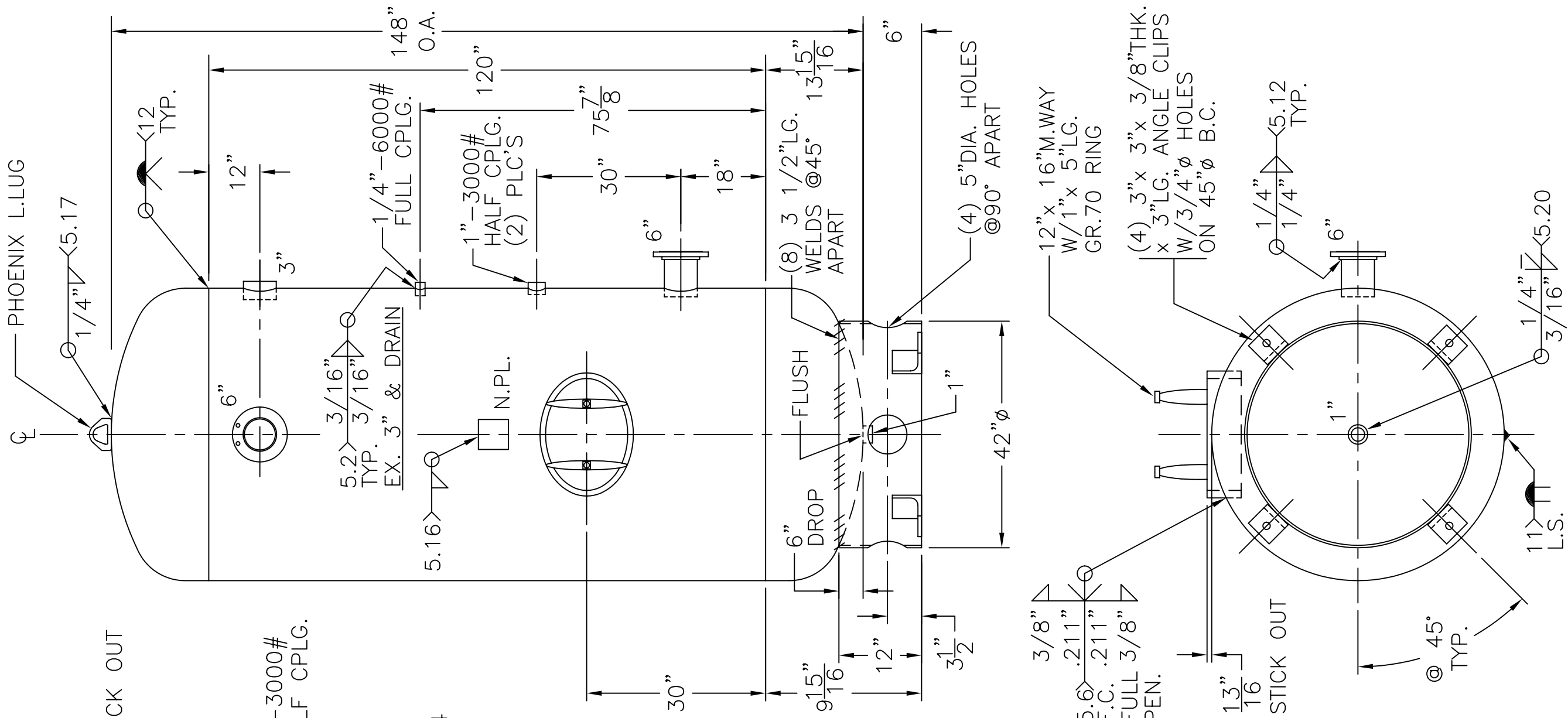


PHOENIX L.LUG



NOTE: 1) HYDRO @ 393 PSIG. MIN.
 2) PRE HEAT WELDS TO 150°F

SHELL / HEADS	.375" SA-455 2:1 S.E. (.335" MIN. REQ'D)	48-VD-1060-R	REV: 9-8-06
			DATE: 12-2-98
		FOR: HANSON STANDARD VERT. AIR TANK	
	.422" SA-455		
		INSIDE: UNPAINTED	
M.A.W.P.	300 PSIG. @ 400 °F		
M.D.M.T.	-20 °F @ 300 PSIG.	OUTSIDE: PRIME	
ASME. SECTION VIII DIV. 1, 2004 ADD 2005			
X-RAY: RT-4 SPOT L.S. & HDS. G.S.		BY: J.G.	
GALLONS:	1060	WT. 3142	LBS.
SERIAL NO.		ROY E. HANSON JR. MFG.	
N.B.		1600 E. WASHINGTON BLVD. LOS ANGELES, CA 90021	

6"-300# R.F.S.O.
 FLG. W/SCH 80
 PIPE x 7 5/8" LG.
 (2) PLC'S