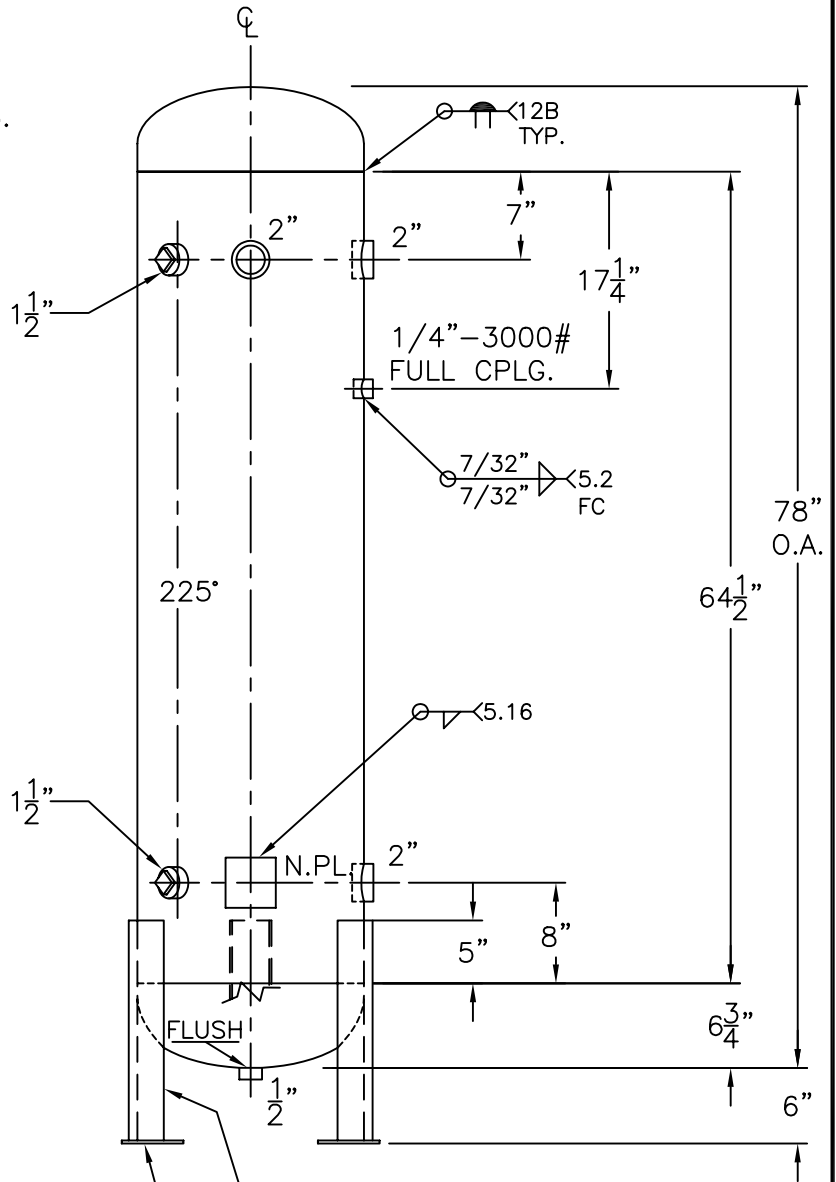
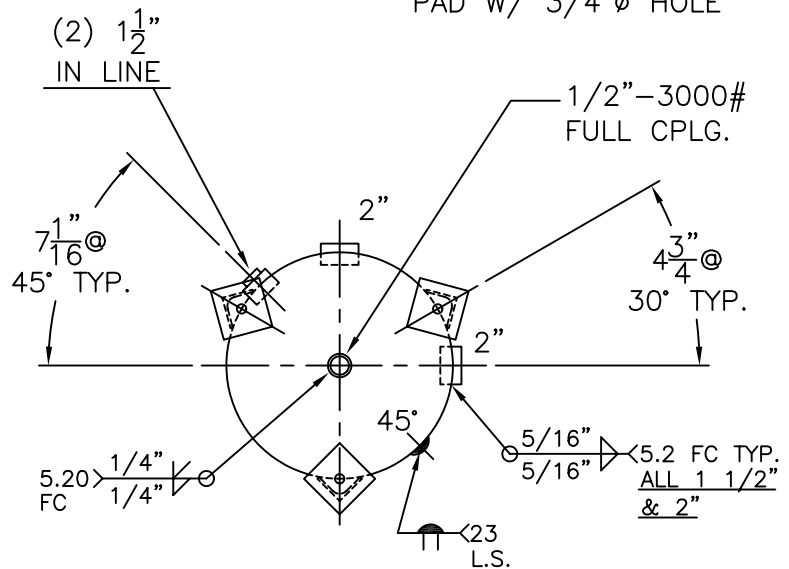


1 1/2"-3000# H.C.
W/STL. PLUG
INSP. OPENING
(2) PLC'S.



(3) 2 1/2"x 2 1/2"x 3/16"THK.
x 17 1/2"LG. ANGLE LEGS

(3) 4"x 4"x 1/4"THK.
PAD W/ 3/4"Ø HOLE



NOTE: 1) HYDRO @ 1431 PSIG. MIN.
2) PRE HEAT BEFORE WELDING TO 150°F.

SHELL / HEADS	
.500" SA-516-70	2:1 S.E.
(.472"MIN.)	
M.A.W.P.	1100 PSIG. @ 400 °F
M.D.M.T.	-20 °F @ 1100 PSIG.
ASME SECTION VIII	DIV. 1, 2004 ADD 2006
X-RAY: RT-2	100% L.S. SPOT ALL G.S.
GALLONS: 73	WT. 670 LBS.
SERIAL NO.	
N.B.	

18-VY-73-1	REV. 10-2-07
FOR: HANSON STANDARD	DATE: 12-28-84
VERT. AIR TANK	
INSIDE: UNPAINTED	
OUTSIDE: PRIME	
LEG-ZONE 4-15 KM.	
BY: J.G.	SCALE: 3/4"=12"
ROY F. HANSON JR. MFG.	
1600 E. WASHINGTON BLVD.	
LOS ANGELES, CA 90021	