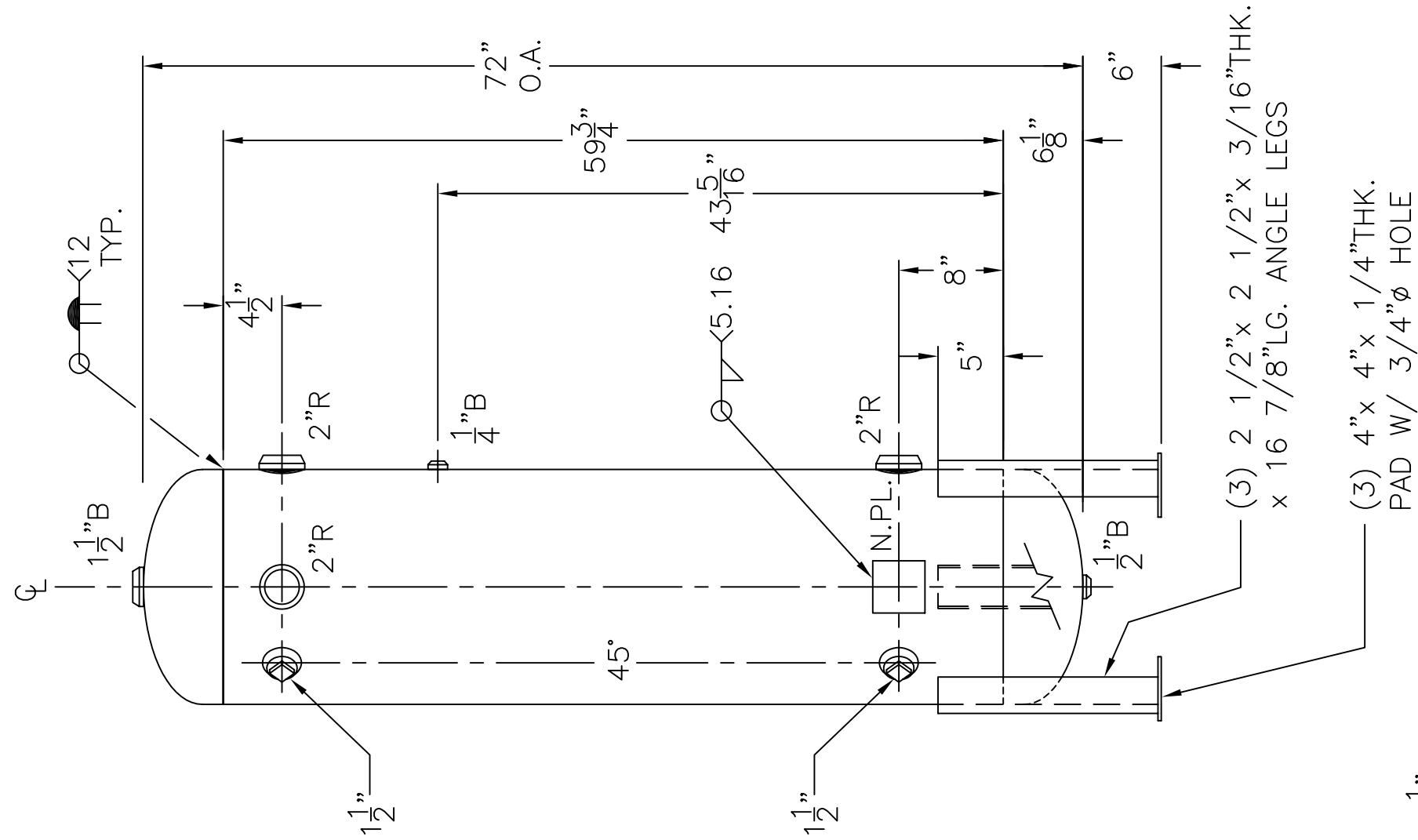
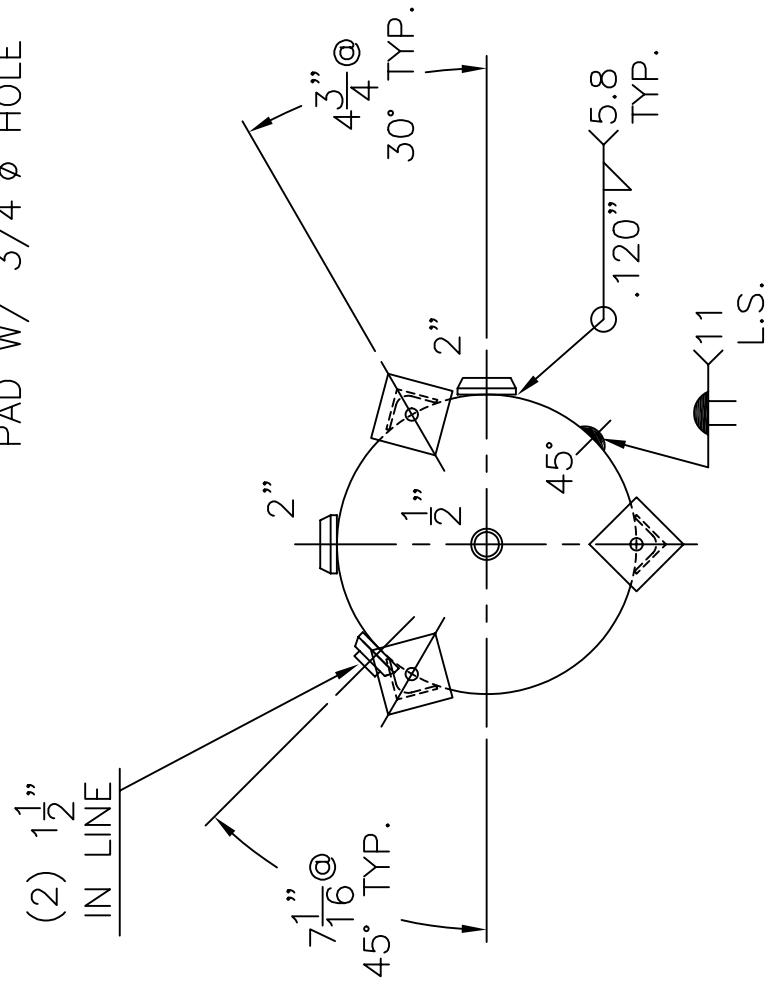


1 1/2" R W/ C.I. PLUG  
 INSP. OPENING  
 (2) PLC'S.



(3) 2 1/2" x 2 1/2" x 3/16" THK.  
 x 16 7/8" LG. ANGLE LEGS  
 (3) 4" x 4" x 1/4" THK.  
 PAD W/ 3/4" Ø HOLE



NOTE: 1) HYDRO @ 391 PSIG. MIN.

SHELL / HEADS	.135" SA-414-G 2:1 S.E.	18-VD-73-L	REV. 4-4-06
	JOGGLE		DATE: 12-28-86
		FOR: HANSON STANDARD	
		VERT. AIR TANK	
	.164" SA-414-G		
		INSIDE: UNPAINTED	
M.A.W.P.	300 PSIG. @ 400 °F		
M.D.M.T.	-20 °F @ 300 PSIG.	OUTSIDE: PRIME	
ASME. SECTION VIII	DIV. 1, 2004 ADD 2005	LEG-ZONE 4-15 KM.	
X-RAY: RT-4	SPOT L.S. & HDS. G.S.	BY: J.G.	SCALE: 3/4"=12"
GALLONS: 73	WT. 216 LBS.	<b>ROY E. HANSON JR. MFG.</b>	
SERIAL NO.		1924 COMPTON AVE.	
N.B.		LOS ANGELES, CA 90011	